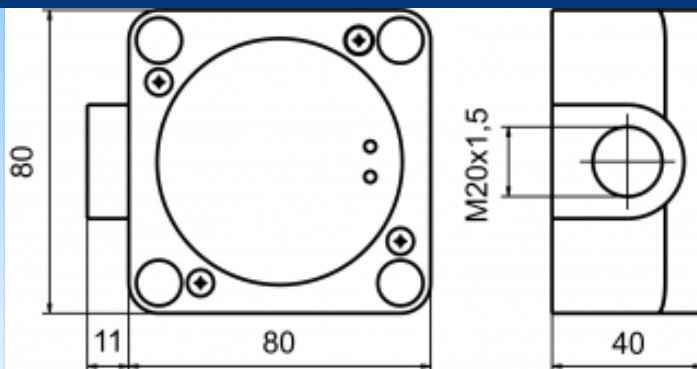
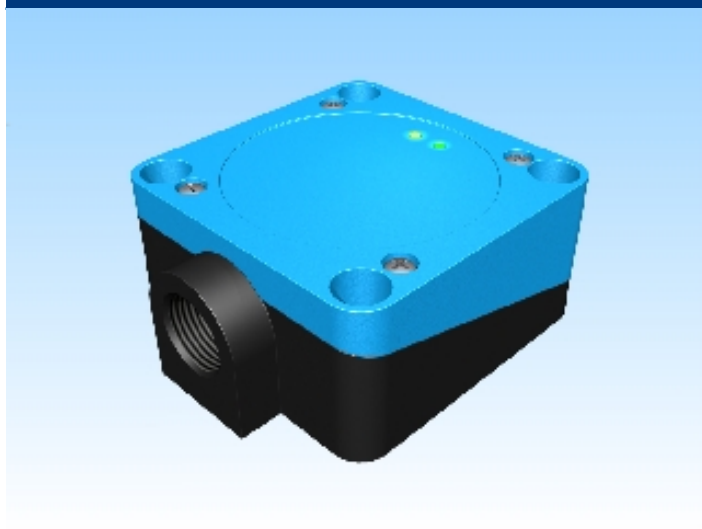


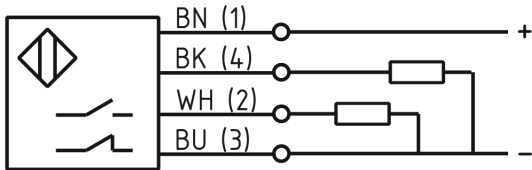


[Article Page](#)

Product Description

inductive sensor DC



Name	KJ40-Q80KB-DPA
Order number	08317651100
Matchcode	9865-1100
Switching distance	40 mm
Mounting	 shielded
Switch type	 Changeover
Signal Type	DC PNP
Connection	Terminal
Connection diagramm	

Dimension (in mm)	Q 80 x 40 x 80
-------------------	----------------

Technical Specification

Operating voltage	10 - 30 V DC
Max. ripple	≤ 10 %
Voltage drop	3 V
Max. load current	200 mA
No load current	≤ 22 mA
Leakage current	≤ 10 μA
Switching frequency	100
Switching hysteresis	≤ 15 %
Operating temperature	-25 ° C to 70 ° C

Temperature drift	≤ 10 %
Repeat accuracy	≤ 2 %
Operating state	LED
Switching state	LED
Short-circuit proof	yes
Overload protection	yes
Reverse voltage protection	yes
Protection category	IP67
EMC-level	DIN EN 60947-5-2: 2008
Housing material	PA 6.6
Utilisation category	DC 13

Errors and omissions exceptet