

## BNS260-11ZG-ST-R



- Long life
- Small body
- no mechanical wear
- 26 mm x 36 mm x 13 mm
- Insensitive to soiling
- Thermoplastic enclosure
- Connector M8 x 1, 4-pole
- Concealed mounting possible
- Insensitive to transverse misalignment

### Data

#### Ordering data

Product type description	BNS 260-11ZG-ST-R
Article number (order number)	101184367
EAN (European Article Number)	4030661321646
eCI@ss number, Version 9.0	27-27-24-02

#### Approval - Standards

Certificates	TÜV cULus EAC
--------------	---------------------

#### General data

Product name	BNS 260
Standards	IEC 60947-5-3 BG-GS-ET-14
Installation conditions (mechanical)	quasi-flush
Enclosure material	Glass-fibre, reinforced thermoplastic
Gross weight	18.5 g

#### General data - Features

Coding	Yes
Integral System Diagnostics, status	Yes

Number of openers	1
Number of shutters	1
Number of safety contacts	2

### Safety appraisal

Standards	ISO 13849-1
Mission Time	20 Year(s)

### Safety appraisal - Safety outputs

B10d- Value Normally-closed contact/Normally open contact (NC/NO)	25,000,000 Operations
---	-----------------------

### Mechanical data

Actuating element	Magnet
Door hinge	Right
Ensured switch distance "ON" S <sub>ao</sub>	5 mm
Ensured switch distance "OFF" S <sub>ar</sub>	15 mm
Notice (Switch distance S <sub>n</sub> )	Axial misalignment, a horizontal and vertical misalignment of the safety sensor and the actuator are tolerated. The possible misalignment depends on the distance of the active surfaces of the sensor and the actuator. The sensor remains active within the tolerance range.
Direction of motion	Head-on to the active surface

### Mechanical data - Connection technique

Terminal Connector	Connector M8
--------------------	--------------

### Mechanical data - Dimensions

Height of sensor	36 mm
Length of sensor	13 mm
Width of sensor	26 mm

### Ambient conditions

Protection class	IP67
Ambient temperature, minimum	-25 °C
Ambient temperature, maximum	+70 °C
Storage and transport temperature, minimum	-25 °C
Storage and transport temperature, maximum	+70 °C
Resistance to vibrations to EN 60068-2-6	10 ... 55 Hz, amplitude 1 mm

Resistance to shock 30 g / 11 ms

### Electrical data

Voltage type DC (direct current)  
Switching voltage, maximum 24 VDC  
Switching current, maximum 0.01 A  
Switching capacity, maximum 0.24 W  
Switching frequency, maximum 5 Hz

### Status indication

Note (Integral System Diagnostics, status ) The LED is illuminated when the guard is closed.

### Scope of delivery

Included in delivery Actuators must be ordered separately.

### Accessory

Recommendation (actuator) BPS 260  
Recommended safety switchgear SRB-E-301ST  
SRB-E-201LC

### Notes

Note (General) The number in brackets indicate the PIN number of the connector.

### Circuit example

Note (Wiring diagram) The contacts S13-S14 and S21-S22 must be integrated in the safety circuit.

### Ordering code

Product type description:

BNS 260-(1)(2)Z(3)-(4)-(5)

(1)

**11** 1 NO contacts/1 NC contact

**02** 2 NC contact

(2)

**without** with diagnostic output

**/01** 1 NC contact

(3)

**without** without LED switching conditions display

**G** with LED switching conditions display

(4)

**without** Pre-wired cable

**ST** with connector

(5)

**L** Door hinge on left-hand side

**R** Door hinge on right-hand side

## Pictures

### Product picture (catalogue individual photo)



ID: kbns2f04

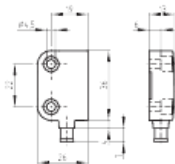
| 42,3 kB | .png | 74.083 x 60.325 mm - 210 x 171

Pixel - 72 dpi

| 540,4 kB | .jpg | 352.778 x 287.161 mm - 1000 x 814

Pixel - 72 dpi

### Dimensional drawing basic component



ID: 1bns2g03

| 24,9 kB | .cdr |

| 61,2 kB | .jpg | 352.778 x 245.181 mm - 1000 x 695

Pixel - 72 dpi

| 2,9 kB | .png | 74.083 x 51.506 mm - 210 x 146 Pixel

- 72 dpi

### Diagram



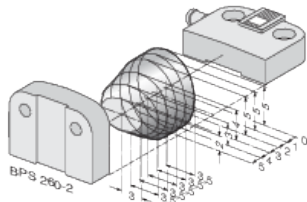
ID: kbns2k03

| 18,7 kB | .cdr |

| 59,6 kB | .jpg | 352.778 x 57.503 mm - 1000 x 163

Pixel - 72 dpi

### Characteristic curve



ID: kbns2d03

| 36,8 kB | .cdr |

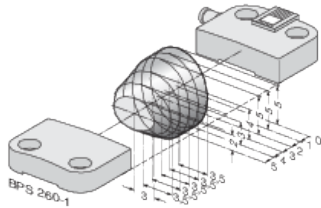
| 18,5 kB | .png | 74.083 x 49.036 mm - 210 x 139

Pixel - 72 dpi

| 200,1 kB | .jpg | 352.778 x 233.892 mm - 1000 x 663

Pixel - 72 dpi

### Characteristic curve



ID: kbns2d02

| 19,2 kB | .png | 74.083 x 49.389 mm - 210 x 140

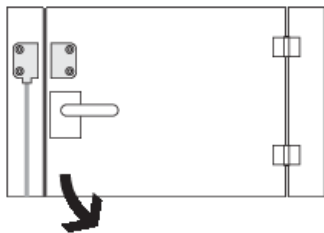
Pixel - 72 dpi

| 200,9 kB | .jpg | 352.778 x 235.303 mm - 1000 x 667

Pixel - 72 dpi

| 36,3 kB | .cdr |

### Clipart

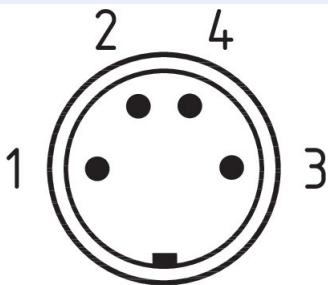


ID: kbns2c01

| 20,1 kB | .cdr |

| 1,7 kB | .png | 74.083 x 52.564 mm - 210 x 149 Pixel  
- 72 dpi

### Contact arrangement



ID: km8--k4b

| 17,0 kB | .cdr |

K.A. Schmersal GmbH & Co. KG, Möddinghofe 30, D-42279 Wuppertal

The details and data referred to have been carefully checked. Images may diverge from original. Further technical data can be found in the manual. Technical amendments and errors possible.

Generated on 26.11.2020 16:39:54