

BNS260-02/01ZG-R



- Long life
- Small body
- Pre-wired cable
- no mechanical wear
- 26 mm x 36 mm x 13 mm
- Insensitive to soiling
- Thermoplastic enclosure
- Concealed mounting possible
- Insensitive to transverse misalignment

Data

Ordering data

Product type description	BNS 260-02/01ZG-R
Article number (order number)	101184374
EAN (European Article Number)	4030661321721
eCl@ss number, Version 9.0	27-27-24-02

Approval - Standards

Certificates	TÜV cULus EAC
--------------	---------------------

General data

Product name	BNS 260
Standards	IEC 60947-5-3 BG-GS-ET-14
Installation conditions (mechanical)	quasi-flush
Enclosure material	Glass-fibre, reinforced thermoplastic
Gross weight	55 g

General data - Features

Coding	Yes
--------	-----

Integral System	Yes
Diagnostics, status	
Number of openers	3
Number of safety contacts	2
Number of cable wires	6

Safety appraisal

Standards	ISO 13849-1
Mission Time	20 Year(s)

Safety appraisal - Safety outputs

B10d Normally-closed contact (NC)	25,000,000 Operations
-----------------------------------	-----------------------

Mechanical data

Actuating element	Magnet
Door hinge	Right
Ensured switch distance "ON" S_{ao}	5 mm
Ensured switch distance "OFF" S_{ar}	15 mm
Notice (Switch distance S_n)	Axial misalignment, a horizontal and vertical misalignment of the safety sensor and the actuator are tolerated. The possible misalignment depends on the distance of the active surfaces of the sensor and the actuator. The sensor remains active within the tolerance range.
Direction of motion	Head-on to the active surface

Mechanical data - Connection technique

Terminal Connector	Cable
Length of cable	1 m
Wire cross-section	0.25 mm ²
Material of the Cable mantle	PVC

Mechanical data - Dimensions

Height of sensor	36 mm
Length of sensor	13 mm
Width of sensor	26 mm

Ambient conditions

Protection class	IP67
Ambient temperature, minimum	-25 °C

Ambient temperature, maximum	+70 °C
Storage and transport temperature, minimum	-25 °C
Storage and transport temperature, maximum	+70 °C
Resistance to vibrations to EN 60068-2-6	10 ... 55 Hz, amplitude 1 mm
Resistance to shock	30 g / 11 ms

Electrical data

Voltage type	DC (direct current)
Switching voltage, maximum	24 VDC
Switching current, maximum	0.01 A
Switching capacity, maximum	0.24 W
Switching frequency, maximum	5 Hz

Status indication

Note (Integral System Diagnostics, status)	The LED is illuminated when the guard is closed.
---------------------------------------------	--------------------------------------------------

Scope of delivery

Included in delivery	Actuators must be ordered separately.
----------------------	---------------------------------------

Accessory

Recommendation (actuator)	BPS 260
Recommended safety switchgear	SRB-E-301ST SRB-E-201LC

Notes

Note (General)	Contact symbols shown for the closed condition of the guard device. The contact configuration for versions with or without LED is identical.
----------------	-------------------------------------------------------------------------------------------------------------------------------------------------

Circuit example

Note (Wiring diagram)	The contacts S11-S12 and S21-S22 must be integrated in the safety circuit.
-----------------------	----------------------------------------------------------------------------

Ordering code

Product type description:

BNS 260-(1)(2)Z(3)-(4)-(5)

(1)

11 1 NO contacts/1 NC contact

02 2 NC contact

(2)

without with diagnostic output

/01 1 NC contact

(3)

without without LED switching conditions display

G with LED switching conditions display

(4)

without Pre-wired cable

ST with connector

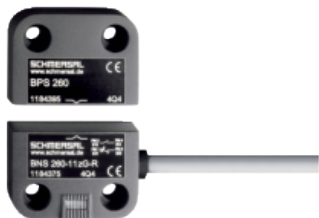
(5)

L Door hinge on left-hand side

R Door hinge on right-hand side

Pictures

Product picture (catalogue individual photo)



ID: kbns2f23

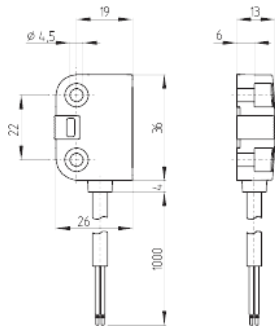
| 314,7 kB | .jpg | 352.778 x 246.239 mm - 1000 x 698

Pixel - 72 dpi

| 25,0 kB | .png | 74.083 x 51.858 mm - 210 x 147

Pixel - 72 dpi

Dimensional drawing basic component



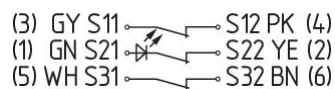
ID: kbns2g05

| 131,1 kB | .jpg | 352.425 x 417.336 mm - 999 x 1183 Pixel - 72 dpi

| 4,5 kB | .png | 73.731 x 87.489 mm - 209 x 248 Pixel - 72 dpi

| 37,3 kB | .cdr |

Diagram



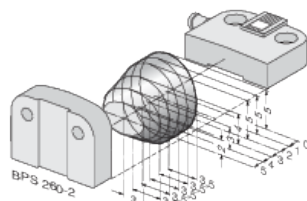
ID: kbns2k02

| 87,9 kB | .jpg | 352.778 x 85.372 mm - 1000 x 242

Pixel - 72 dpi

| 19,4 kB | .cdr |

Characteristic curve



ID: kbns2d03

| 36,8 kB | .cdr |

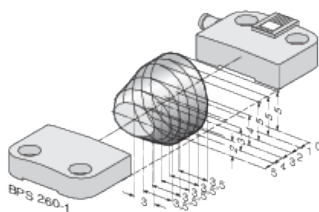
| 18,5 kB | .png | 74.083 x 49.036 mm - 210 x 139

Pixel - 72 dpi

| 200,1 kB | .jpg | 352.778 x 233.892 mm - 1000 x 663

Pixel - 72 dpi

Characteristic curve



ID: kbns2d02

| 19,2 kB | .png | 74.083 x 49.389 mm - 210 x 140

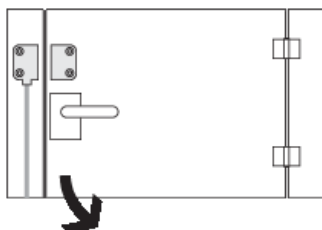
Pixel - 72 dpi

| 200,9 kB | .jpg | 352.778 x 235.303 mm - 1000 x 667

Pixel - 72 dpi

| 36,3 kB | .cdr |

Clipart



ID: kbns2c01

| 20,1 kB | .cdr |

| 1,7 kB | .png | 74.083 x 52.564 mm - 210 x 149 Pixel - 72 dpi

K.A. Schmersal GmbH & Co. KG, Möddinghofe 30, D-42279 Wuppertal

The details and data referred to have been carefully checked. Images may diverge from original. Further technical data can be found in the manual. Technical amendments and errors possible.

Generated on 26.11.2020 16:45:32