

## BNS33-11Z



- Long life
- no mechanical wear
- 88 mm x 25 mm x 13 mm
- Insensitive to soiling
- Thermoplastic enclosure
- Concealed mounting possible
- Insensitive to transverse misalignment

### Data

#### Ordering data

Product type description	BNS 33-11Z
Article number (order number)	101107770
EAN (European Article Number)	4030661024301
eCl@ss number, Version 9.0	27-27-24-02

#### Approval - Standards

Certificates	TÜV cULus EAC
--------------	---------------------

#### General data

Product name	BNS 33
Standards	IEC 60947-5-3 BG-GS-ET-14
Installation conditions (mechanical)	not flush
Enclosure material	Glass-fibre, reinforced thermoplastic
Gross weight	85 g

#### General data - Features

Prerequisite evaluation unit	Yes
Number of openers	1
Number of shutters	1

## Safety appraisal

Standards	ISO 13849-1
Mission Time	20 Year(s)

## Safety appraisal - Safety outputs

B10d- Value Normally-closed contact/Normally open contact (NC/NO)	25,000,000 Operations
---	-----------------------

## Mechanical data

Active area	lateral
Actuating element	Magnet
Ensured switch distance "ON" $S_{ao}$	5 mm
	8 mm
Ensured switch distance "OFF" $S_{ar}$	15 mm
	18 mm
Repeat accuracy $R$	$\leq 0.1 \times S_{ao}$
Direction of motion	Head-on to the active surface

## Mechanical data - Connection technique

Terminal Connector	Cable
Length of cable	1 m
Wire cross-section	0.25 mm <sup>2</sup>
Wire cross-section	23 AWG
Material of the Cable mantle	PVC

## Mechanical data - Dimensions

Height of sensor	25 mm
Length of sensor	13 mm
Width of sensor	88 mm

## Ambient conditions

Protection class	IP67
Ambient temperature, minimum	-25 °C
Ambient temperature, maximum	+70 °C
Storage and transport temperature, minimum	-25 °C
Storage and transport temperature, maximum	+70 °C
Resistance to vibrations to EN 60068-2-6	10 ... 55 Hz, amplitude 1 mm
Resistance to shock	30 g / 11 ms

## Electrical data

Voltage type	AC (alternating current) DC (direct current)
Switching voltage, maximum	100 VAC
Switching voltage, maximum	100 VDC
Switching current, maximum	0.4 A
Switching capacity, maximum	10 W
Switching frequency, maximum	5 Hz

### Electrical data - Digital Output

Versions	Miscellaneous, Reed contacts
----------	------------------------------

### Scope of delivery

Included in delivery	Actuators must be ordered separately.
----------------------	---------------------------------------

### Accessory

Recommendation (actuator)	BPS 33-2326
Recommended safety switchgear	SRB-E-301ST SRB-E-201LC

### Notes

Note (General)	Contact symbols shown for the closed condition of the guard device. The contact configuration for versions with or without LED is identical.
----------------	---

### Ordering code

Product type description:

BNS 33-(1)Z(2)-(3)-(4)

(1)

<b>02</b>	2 NC contact
<b>11</b>	1 NO contacts/1 NC contact
<b>12</b>	1 NO contact/2 NC contacts

(2)

<b>without</b>	without LED switching conditions display
<b>G</b>	with LED switching conditions display

(3)

<b>without</b>	with cable
----------------	------------

**ST** with connector M8

(4)

**2187** Individual contact outlet

**2187-10** Individual contact outlet with LED

**2237** Actuation from cable direction

## Pictures

### Product picture (catalogue individual photo)

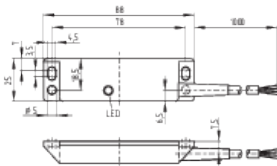


ID: kbns3f22

| 145,7 kB | .jpg | 352.778 x 78.317 mm - 1000 x 222  
Pixel - 72 dpi

| 11,8 kB | .png | 74.083 x 16.581 mm - 210 x 47 Pixel  
- 72 dpi

### Dimensional drawing basic component

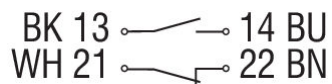


ID: 1bns3g03

| 37,7 kB | .cdr |  
| 88,2 kB | .jpg | 352.778 x 248.003 mm - 1000 x 703  
Pixel - 72 dpi

| 7,4 kB | .png | 74.083 x 52.211 mm - 210 x 148 Pixel  
- 72 dpi

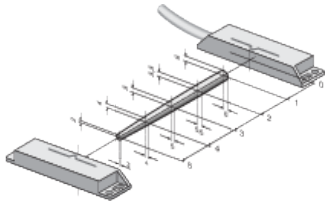
### Diagram



ID: k1o1sk19

| 53,4 kB | .jpg | 352.778 x 83.961 mm - 1000 x 238  
Pixel - 72 dpi

## Characteristic curve



ID: kbns3a01

| 124,5 kB | .jpg | 352.778 x 216.253 mm - 1000 x 613

Pixel - 72 dpi

| 13,1 kB | .png | 74.083 x 45.508 mm - 210 x 129

Pixel - 72 dpi

| 96,3 kB | .cdr |

K.A. Schmersal GmbH & Co. KG, Möddinghofe 30, D-42279 Wuppertal

The details and data referred to have been carefully checked. Images may diverge from original. Further technical data can be found in the manual. Technical amendments and errors possible.

Generated on 26.11.2020 16:40:39