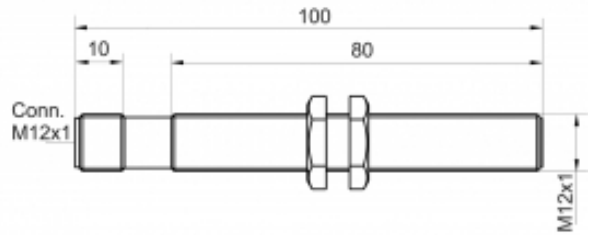
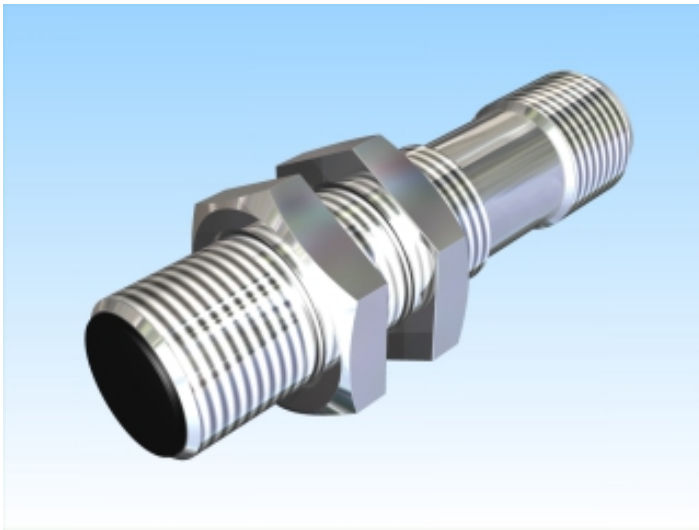



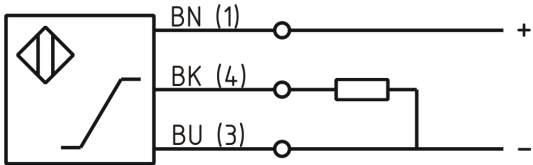


[Article Page](#)



Name	KJ2,5-M12MB100-ANU-V2
Order number	08317140865
Matchcode	9914-0865
Switching distance	2,5 mm
Mounting	 shielded
Switch type	 analog
Signal Type	Analog Voltage
Connection	 Cable
Connection diagramm	

Dimension (in mm) fine-pitch thread M12 x 100

Special features	Output Voltage 1 ... 9 V
Operating voltage	18 - 30 VDC
Max. ripple	≤ 5 %
No load current	≤ 10 mA
Switching frequency	100 Hz
Operating temperature	-25 ° C to 70 ° C
Temperature drift	+/- 8 %
Repeat accuracy	≤ 1 %

Linearity	≤ 3 %
Time delay	300 ms
Resolution	4 V / mm
Reverse voltage protection	yes
Protection category	IP67
EMC-level	DIN EN 60947-5-7:2004-06
Housing material	Brass, nickel plated
Material active face	PCB
Utilisation category	DC 13
Contact material	CuSn
Contact surface material	NiAu
Contact holder	PA 6
Nominal operating voltage	24 V DC
Termination	Connector M12 4pin
internal Load Resistor	