

## Actuator CES-A-BSP

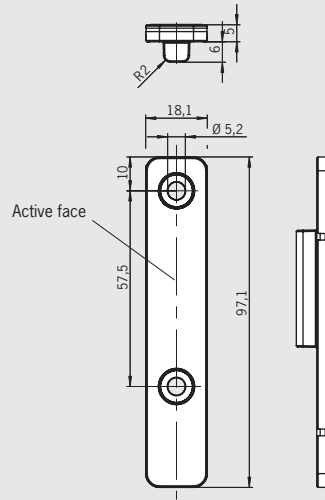
► Optimized for aluminum profile mounting



For possible combinations see page 24

### Actuator CES-A-BSP

#### Dimension drawing



#### Ordering table

Series	Comment	Version	Order no. / item
CES-A-BSP	Please order installation material separately		<b>104970</b> CES-A-BSP-104970
Installation material for CES-A-BSP	For Bosch profiles with 8 mm groove	2 screws and 2 clamping pieces	<b>106633</b> Installation material 8-groove Bosch
	For Bosch profiles with 10 mm groove	2 screws and 2 clamping pieces	<b>106634</b> Installation material 10-groove Bosch
	For ITEM profiles with 8mm groove	2 screws and 2 clamping pieces	<b>106635</b> Installation material 8-groove ITEM

#### Technical data

Parameter	Value			Unit
	min.	typ.	max.	
Housing material	Reinforced thermoplastic, fully encapsulated			
Weight	0.02			kg
Ambient temperature	-25	-	+70	°C
Degree of protection	IP67			
Installation position	Active face opposite read head			
Power supply	Inductive via read head			

## Actuator CES-A-BBN

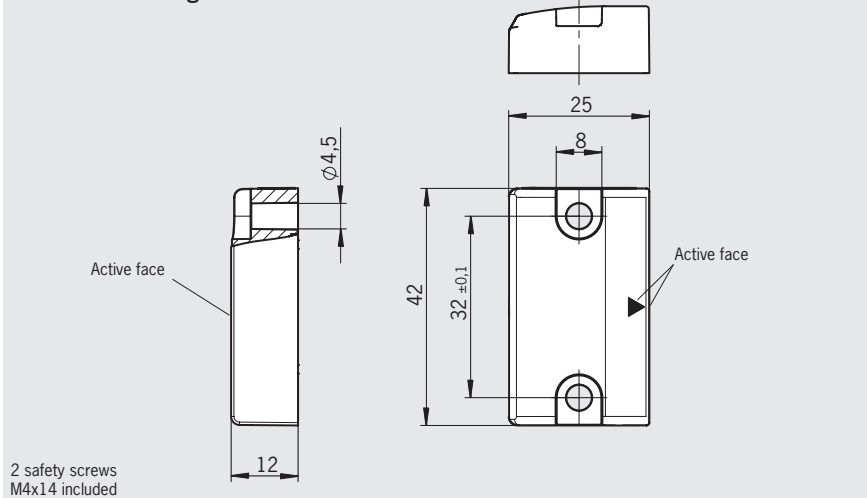
- ▶ Rectangular design  
42 x 25 mm
- ▶ Attachment compatible with actuator  
CES-A-BBA/BCA



For possible combinations see page 24

### Actuator CES-A-BBN

#### Dimension drawing



CES-AZ

#### Ordering table

Series	Comment	Version	Order no. / item
CES-A-BBN	2 safety screws M4 x 14 are supplied		<b>106600</b> CES-A-BBN-106600

#### Technical data

Parameter	Value			Unit
	min.	typ.	max.	
Housing material	Reinforced thermoplastic (PBT), fully encapsulated			
Dimensions	42 x 45 x 12			mm
Weight	0.025			kg
Ambient temperature	-25	-	+70	°C
Degree of protection	IP67			
Installation position	Active face opposite read head			
Power supply	Inductive via read head			

## Actuator CES-A-BDN-06

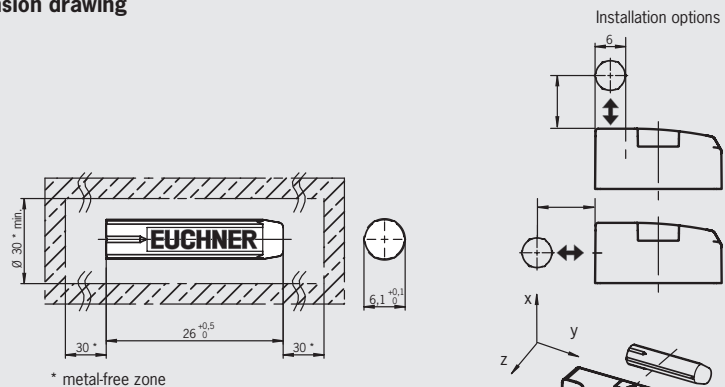
- ▶ Cylindrical design  $\varnothing$  6 mm



For possible combinations see page 24

### Actuator CES-A-BDN-06

#### Dimension drawing



#### Ordering table

Series	Comment	Version	Order no. / item
CES-A-BDN-06			104730 CES-A-BDN-06-104730

#### Technical data

Parameter	Value			Unit
	min.	typ.	max.	
Housing material	Macromelt PA-based plastic			
Dimensions	26 x $\varnothing$ 6			mm
Weight	0.005			kg
Ambient temperature	-40	-	+70	°C
Degree of protection	IP67/IP69K			
Installation position	Active face opposite read head			
Power supply	Inductive via read head			

## Actuator CES-A-BBA/CES-A-BCA



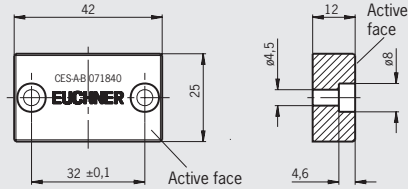
- ▶ Rectangular design  
42 x 25 mm



For possible combinations see page 24

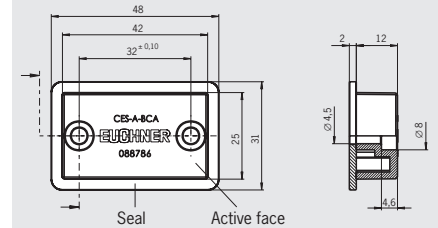
### Actuator CES-A-BBA (Fortron)

#### Dimension drawing



2 safety screws  
M4x14 included

### Actuator CES-A-BCA (PE-HD) Housing material PE-HD



2 safety screws  
M4x14 included

### Ordering table

Series	Comment	Version	Order no. / item
CES-A-BBA	2 safety screws M4 x 14 are supplied	-	<b>071840</b> CES-ABBA
CES-A-BBA-EX	2 safety screws M4 x 14 are supplied	ATEX <sup>1)</sup>	<b>098158</b> <sup>1)</sup> CES-A-BBA-EX
CES-A-BCA	2 safety screws M4 x 14 are supplied Flat seal included	Housing material PE-HD <sup>2)</sup>	<b>088786</b> CES-A-BCA

1) EX II 3G Ex nL IIC T70°C (zone 2 gases) and EX II 3D Ex tD A22 T70°C

2) Suitable for use in aggressive media (e. g. acids, alkalis)

### Technical data

Parameter	Value			Unit
	min.	typ.	max.	
Housing material	Fortron, reinforced thermoplastic, fully encapsulated			
- CES-ABBA	Fortron, reinforced thermoplastic, fully encapsulated			
- CES-ABCA	Plastic PE-HD without reinforcement, fully encapsulated			
Flat seal material (CES-A-BCA only)	Fluororubber 75 FPM 4100			
Dimensions	42 x 25 x 12			mm
Weight	0.02			kg
Ambient temperature				°C
- CES-ABBA	-25	-	+70	
- CES-A-BBA-EX	-25	-	+60	
- CES-ABCA	-25	-	+50	
Degree of protection	IP67/IP69K			
Installation position	Active face opposite read head			
Power supply	Inductive via read head			

Actuator CES-A-BQA

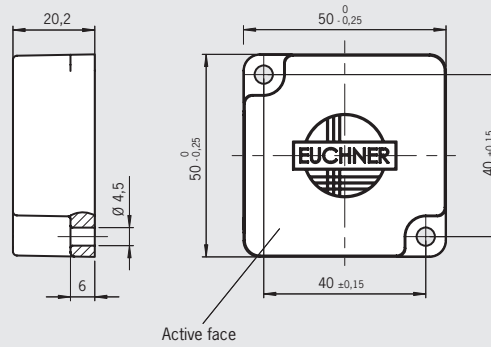
- ▶ Rectangular design  
50 x 50 mm



For possible combinations see page 24

Actuator CES-A-BQA

Dimension drawing



2 safety screws  
M4x14 included

Ordering table

Series	Comment	Version	Order no. / item
CES-A-BQA	2 safety screws M4 x 14 are supplied		<b>098108</b> CES-A-BQA

Technical data

Parameter	Value			Unit
	min.	typ.	max.	
Housing material	Fortron, reinforced thermoplastic, fully encapsulated			
Dimensions	50 x 50 x 20.2			mm
Weight	0.07			kg
Ambient temperature	-25	-	+70	°C
Degree of protection	IP67			
Installation position	Active face opposite read head			
Power supply	Inductive via read head			

## Actuator CES-A-BDA

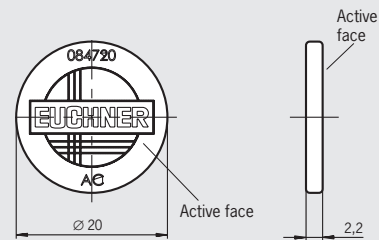
- ▶ Round design  $\varnothing$  20 mm



For possible combinations see page 24

### Actuator CES-A-BDA

#### Dimension drawing



CES-AZ

#### Ordering table

Series	Comment	Version	Order no. / item
CES-A-BDA			084720 CES-A-BDA-20

#### Technical data

Parameter	Value			Unit
	min.	typ.	max.	
Housing material	Plastic PC			
Dimensions	$\varnothing$ 20 x 2.2			mm
Weight	0.0008			kg
Ambient temperature	-25	-	+70	°C
Degree of protection	IP67			
Installation position	Active face opposite read head			
Power supply	Inductive via read head			

## Actuator CES-A-BMB/CES-A-BMB-EX



► Cylindrical design M12 x 0.75



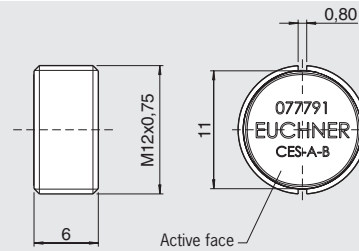
For possible combinations see page 24

### Insertion tool

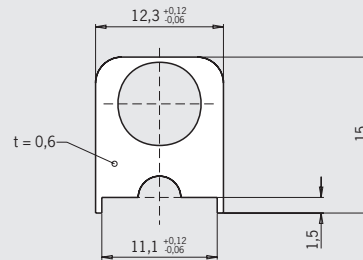
With the aid of the insertion tool, the actuator CES-A-BMB (cylindrical design) can be screwed into a prepared M12 x 0.75 thread in safety doors.

### Actuator CES-A-BMB

#### Dimension drawing



#### Insertion tool



### Ordering table

Series	Comment	Version	Order no. / item
CES-A-BMB			<b>077791</b> CES-A-BMB
CES-A-BMB-EX		ATEX <sup>1)</sup>	<b>098159</b> <sup>1)</sup> CES-A-BMB-EX
Insertion tool		For actuator CES-A-BMB	<b>037662</b>

1) EX II 3G Ex nL IIC T70°C (zone 2 gases)

### Technical data

Parameter	Value			Unit
	min.	typ.	max.	
Housing material	Stainless steel, Niro			
Dimensions	M12 x 0.75, depth 6			mm
Weight	0.002			kg
Ambient temperature	-25	-	+70	°C
Ambient pressure (only applies if the pressure acts on all sides of the actuator)	-	-	10	bar
Degree of protection	IP67			
Installation position	Active face opposite read head			
Power supply	Inductive via read head			

## Actuator CEM-A-BE05/CEM-A-BE05-EX



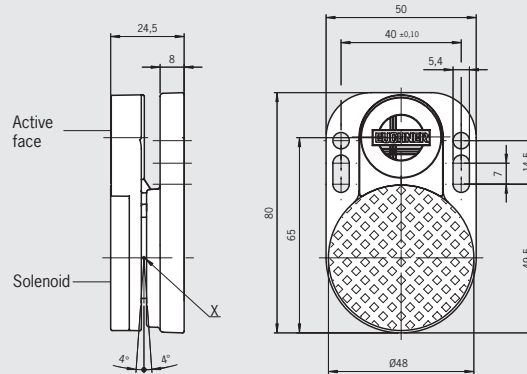
▶ Locking force 500 N

### Actuator CEM-A-BE05/CEM-A-BE05-EX



For possible combinations see page 24

### Dimension drawing



2 safety screws  
M5x16 included

### Ordering table

Series	Order no / item
CEM-A-BE05	<b>094805</b> CEM-A-BE05
CEM-A-BE05-EX	<b>097178</b> <sup>1)</sup> CEM-A-BE05-EX

### Technical data

Parameter	Value			Unit
	min.	typ.	max.	
Housing material	Aluminum			
Material, read head CES	Plastic (PPS)			
Solenoid mating plate material	Galvanized steel			
Weight	Approx. 0.18			kg
Ambient temperature	-25	-	+50	°C
Degree of protection acc. to IEC 60529	IP67			
Installation position	Active face opposite read head			
Adjustment angle (around point X, see dimension drawing)	± 4			SDgr

1) EX II 3G Ex nA IIC T6



## Actuator CEM-A-BH10

► Locking force 1000 N

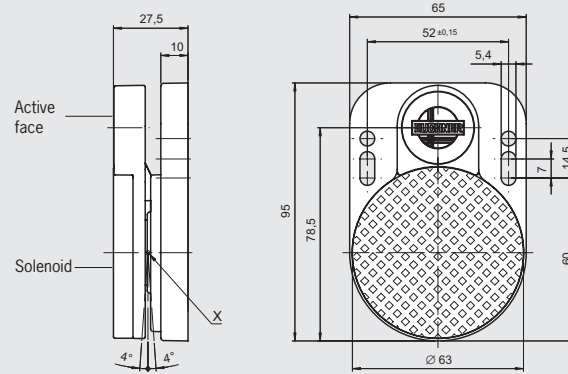
### Actuator CEM-A-BH10



#### Dimension drawing



For possible combinations see page 24



2 safety screws  
M5x16 included

CES-AZ

#### Ordering table

Series	Order no / item
CEM-A-BH10	095175 CEM-A-BH10

#### Technical data

Parameter	Value			Unit
	min.	typ.	max.	
Housing material	Aluminum			
Material, read head CES	Plastic (PPS)			
Solenoid mating plate material	Galvanized steel			
Weight	Approx. 0.3			kg
Ambient temperature	-25	-	+50	°C
Degree of protection acc. to IEC 60529	IP67			
Installation position	Active face opposite read head			
Adjustment angle (around point X, see dimension drawing)	± 4			SDgr

## Actuator CES-A-BPA

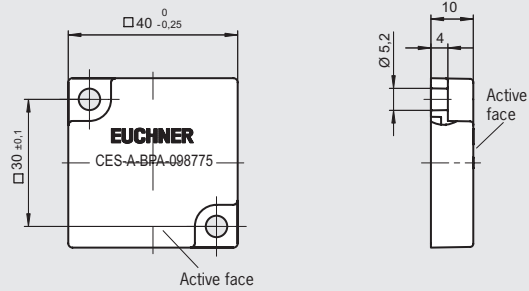
- ▶ Rectangular design  
40 x 40 mm



For possible combinations see page 83

### Actuator CES-A-BPA

#### Dimension drawing



2 safety screws  
M5x10 included

#### Ordering table

Series	Comment	Version	Order no. / item
CES-A-BPA	2 safety screws M5 x 10 are supplied	-	<b>098775</b> CES-A-BPA
CES-A-BPA-EX	2 safety screws M5 x 10 are supplied	ATEX <sup>1)</sup>	<b>102125</b> CES-A-BPA-EX

#### Technical data

Parameter	Value			Unit
	min.	typ.	max.	
Housing material	PPS			
Weight	0.025			kg
Degree of protection acc. to IEC 60529	IP67/IP69K			
Ambient temperature	-25	-	+70	°C
Installation position	Active face opposite read head			
Power supply	Inductive via read head			

1) EX II 3G Ex nL II C T70 °C (zone 2, gases)

EX II 3D Ex tD A22 T70 °C (zone 2, dusts)

## Position actuator CES-A-NBA-...

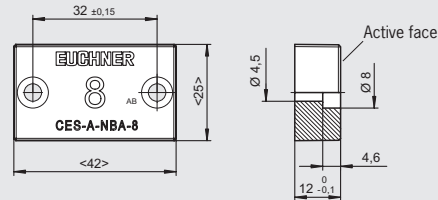
- ▶ Rectangular design  
42 x 25 mm
- ▶ Actuator number printed on the housing



For possible combinations see page 83

### Position actuator CES-A-NBA-...

#### Dimension drawing



2 safety screws  
M4x14 included

### Ordering table

Series	Comment	Actuator number	Order no. / item
CES-A-NBA...	2 safety screws M4 x 14 are supplied	2	<b>090682</b> CES-A-NBA-2
		3	<b>090683</b> CES-A-NBA-3
		4	<b>090684</b> CES-A-NBA-4
		5	<b>090685</b> CES-A-NBA-5
		6	<b>090686</b> CES-A-NBA-6
		7	<b>090687</b> CES-A-NBA-7
		8	<b>090688</b> CES-A-NBA-8
		9	<b>090689</b> CES-A-NBA-9
		A	<b>090690</b> CES-A-NBA-A
		B	<b>090691</b> CES-A-NBA-B
		C	<b>090692</b> CES-A-NBA-C
		D	<b>090693</b> CES-A-NBA-D
		E	<b>090694</b> CES-A-NBA-E
		F	<b>090695</b> CES-A-NBA-F

### Technical data

Parameter	Value			Unit
	min.	typ.	max.	
Housing material	Fortron, reinforced thermoplastic, fully encapsulated			
Housing color	green			
Dimensions	42 x 25 x 12			mm
Weight	0.02			kg
Ambient temperature	-25	-	+70	°C
Degree of protection	IP67			
Installation position	Active face opposite read head			
Power supply	Inductive via read head			
Storage capacity	4 bits (1 BCD digit)			
Data retention time	20			years

## Actuator CES-A-BRN

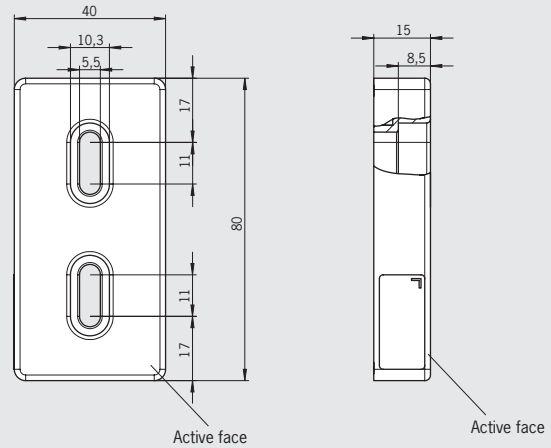
- ▶ Rectangular design  
80 x 40 mm



For possible combinations see page 99

### Actuator CES-A-BRN

#### Dimension drawing



#### Ordering table

Series	Comment	Version	Order no.
CES-A-BRN	2 safety screws M5 x 16 are supplied	-	<b>100251</b> CES-A-BRN-100251

#### Technical data

Parameter	Value			Unit
	min.	typ.	max.	
Housing material	PPS			
Dimensions	80 x 40 x 15			mm
Weight	0.06			kg
Ambient temperature	-25	-	+70	°C
Degree of protection acc. to EN IEC 60529	IP67			
Installation position	Active face opposite read head			
Power supply	Inductive via read head			

## Actuator CES-A-BLN...

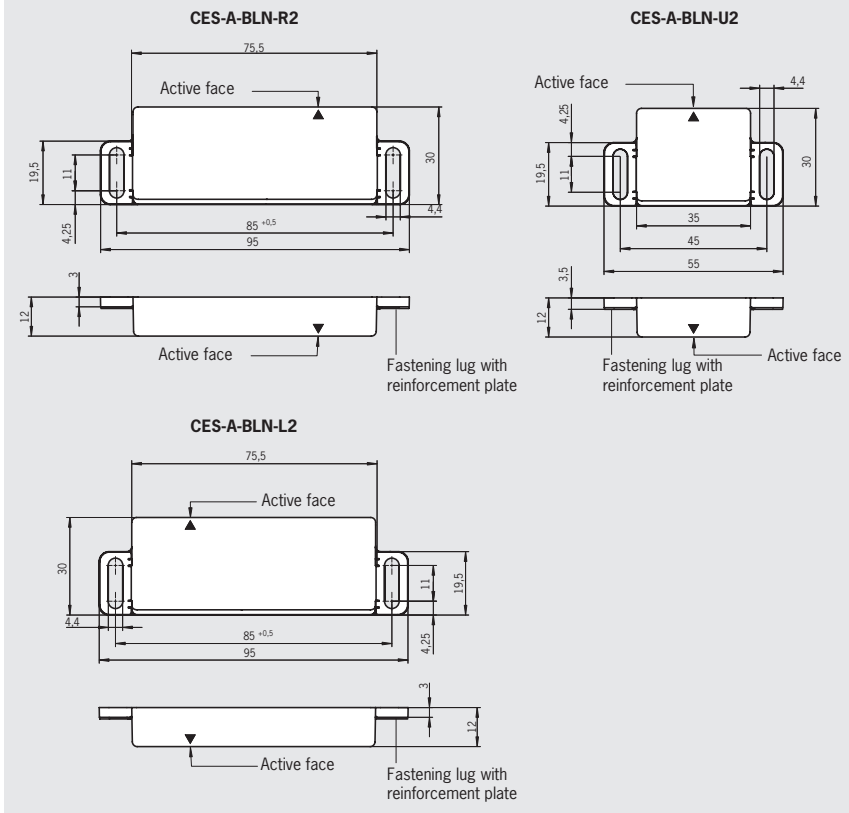
- ▶ Rectangular design 55 x 30 mm and 95 x 30 mm



For possible combinations see page 114

### Actuator CES-A-BLN...

#### Dimension drawing



#### Ordering table

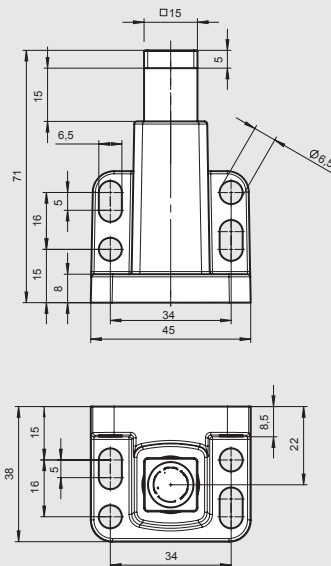
Series	Comment	Version	Order no./ Article
Actuator CES-A-BLN...	2 safety screws M4 X 14 and reinforcement plates included	95 mm x 30 mm x 12 mm Door hinge right	<b>100776</b> CES-A-BLN-R2-100776
		95 mm x 30 mm x 12 mm Door hinge left	<b>104510</b> CES-A-BLN-L2-104510
		55 mm x 30 mm x 12 mm Usage independent of position of door hinge	<b>103450</b> CES-A-BLN-U2-103450

#### Technical data

Parameter	Value			Unit
	min.	typ.	max.	
Housing material	Plastic PBT			
Dimensions				
- CES-A-BLN-R2/CES-A-BLN-L2	95 x 30 x 12			mm
- CES-A-BLN-U2	55 x 30 x 12			
Weight				
- CES-A-BLN-R2/CES-A-BLN-L2	0.04			kg
- CES-A-BLN-U2	0.02			
Ambient temperature	- 40	-	+ 70	°C
Degree of protection according to EN 60529	IP67/IP69K			
Installation position	Active face opposite read head			
Power supply	Inductive via read head			

## Accessories

**Actuator CET-A-BWK-50X**  
for safety switch CET-AR



## Ordering table

Designation	Version/usage	Order no. / item
<b>Actuator for read head CET-AR</b>	Locking force 6500 N (incl. safety screws)	<b>096327</b> CET-A-BWK-50X
<b>Safety screws M5 x 16</b>	For actuator CET-A-BWK-50X (replacement) packaging unit: 100 ea.	<b>073456</b> M5x16/V100
<b>Handle for wire front release (Bowden)</b>	For safety switch CET-AR with wire front release (bowden)	<b>099795</b> Handle for wire front release (Bowden)