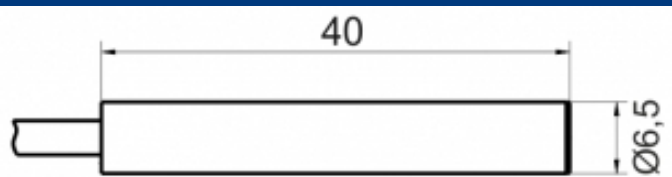
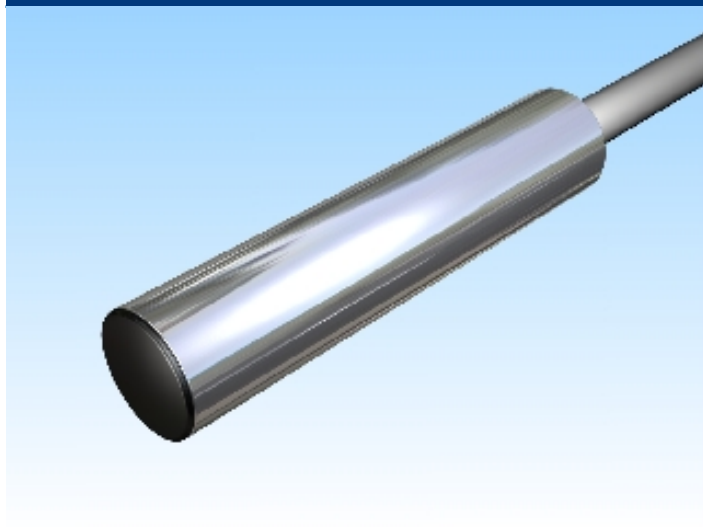


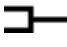
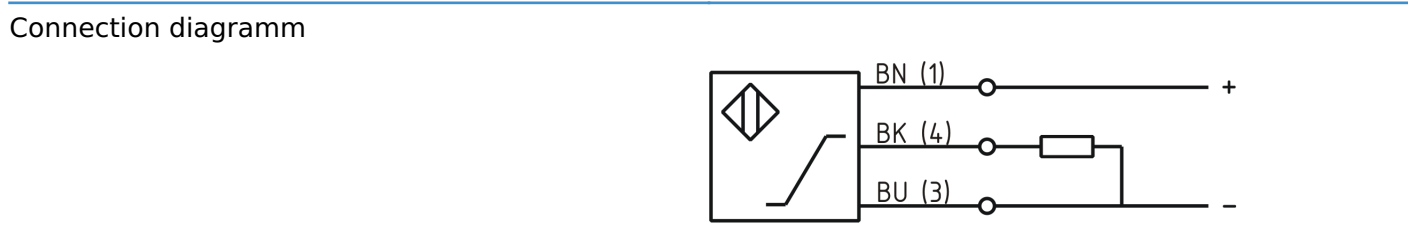


[Article Page](#)

**Product Description** **inductive sensor analogue**



Name	KJ2-G6,5MB40-ANU-X0409
Order number	08317140052
Switching distance	2 mm
Mounting	 shielded
Switch type	 analog
Signal Type	Analog Voltage
Connection	 Cable



Dimension (in mm)	D 6.5 x 40
-------------------	------------

**Technical Specification**

Special features	Output Voltage 0 ... 10 V
Operating voltage	11 - 35 VDC
Max. ripple	≤ 5 %
No load current	≤ 10 mA
Switching frequency	400 Hz
Operating temperature	-25 ° C to 70 ° C
Temperature drift	+/-8 %
Repeat accuracy	≤ 1 %
Linearity	≤ 3 %

Pulse rate of rise	6,66 V/m +/- 5%
Protection category	IP67
EMC-level	DIN EN 60947-5-7: 2004-06
Housing material	Brass, nickel plated
Material active face	ULTRAMID B3ZG3
Cable length	5 m
Utilisation category	DC 13
Cable material	PVC LIYY grau (grey)
Nominal operating voltage	24 V DC
Cable cross	3x0.14 mm <sup>2</sup>
FIT / MTTF acc. to SIEMENS 29500	87,12 / 1310y

**Errors and omissions exceptet**